

# SAFETY DATA SHEET

23000/43000

## Section 1. Identification

**Product name** : MINWAX® Fast-Drying Polyurethane Clear Gloss  
**Product code** : 23000/43000  
**Other means of identification** : Not available.  
**CAS #** : Not applicable.  
**Product type** : Liquid.

### Relevant identified uses of the substance or mixture and uses advised against

Not applicable.

**Manufacturer** : MINWAX Company  
10 Mountainview Road  
Upper Saddle River, NJ 07458

**Emergency telephone number of the company** : (216) 566-2917  
**Product Information Telephone Number** : (800) 523-9299  
**Regulatory Information Telephone Number** : (216) 566-2902  
**Transportation Emergency Telephone Number** : (800) 424-9300

## Section 2. Hazards identification

**OSHA/HCS status** : This material is considered hazardous by the OSHA Hazard Communication Standard (29 CFR 1910.1200).

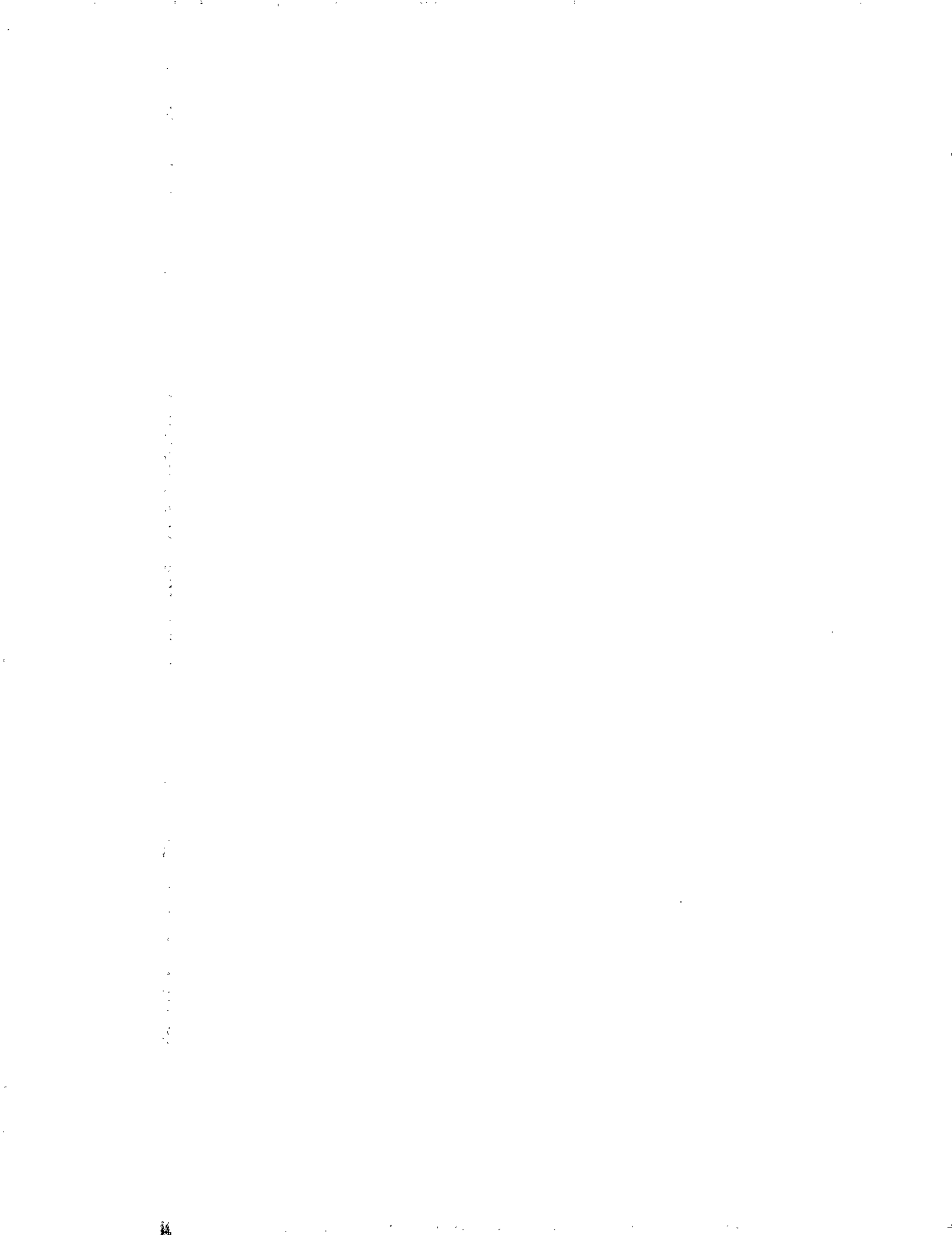
**Classification of the substance or mixture** : FLAMMABLE LIQUIDS - Category 3  
SKIN SENSITIZATION - Category 1  
TOXIC TO REPRODUCTION (Unborn child) - Category 2  
SPECIFIC TARGET ORGAN TOXICITY (SINGLE EXPOSURE) (Respiratory tract irritation) - Category 3  
SPECIFIC TARGET ORGAN TOXICITY (SINGLE EXPOSURE) (Narcotic effects) - Category 3  
SPECIFIC TARGET ORGAN TOXICITY (REPEATED EXPOSURE) - Category 1  
ASPIRATION HAZARD - Category 1  
Percentage of the mixture consisting of ingredient(s) of unknown acute toxicity: 58.3%

### GHS label elements

**Hazard pictograms** :



**Signal word** : Danger



## Section 2. Hazards identification

**Hazard statements** : Flammable liquid and vapor.  
May cause an allergic skin reaction.  
Suspected of damaging the unborn child.  
May be fatal if swallowed and enters airways.  
May cause respiratory irritation.  
May cause drowsiness or dizziness.  
Causes damage to organs through prolonged or repeated exposure.

### Precautionary statements

**General** : Read label before use. Keep out of reach of children. If medical advice is needed, have product container or label at hand.

**Prevention** : Obtain special instructions before use. Do not handle until all safety precautions have been read and understood. Wear protective gloves. Wear eye or face protection. Wear protective clothing. Keep away from heat, hot surfaces, sparks, open flames and other ignition sources. No smoking. Use explosion-proof electrical, ventilating, lighting and all material-handling equipment. Use only non-sparking tools. Take precautionary measures against static discharge. Keep container tightly closed. Use only outdoors or in a well-ventilated area. Do not breathe vapor. Do not eat, drink or smoke when using this product. Wash hands thoroughly after handling. Contaminated work clothing must not be allowed out of the workplace.

**Response** : Get medical attention if you feel unwell. IF exposed or concerned: Get medical attention. IF INHALED: Remove person to fresh air and keep comfortable for breathing. Call a POISON CENTER or physician if you feel unwell. IF SWALLOWED: Immediately call a POISON CENTER or physician. Do NOT induce vomiting. IF ON SKIN (or hair): Take off immediately all contaminated clothing. Rinse skin with water or shower. IF ON SKIN: Wash with plenty of soap and water. Wash contaminated clothing before reuse. If skin irritation or rash occurs: Get medical attention.

**Storage** : Store locked up. Store in a well-ventilated place. Keep cool.

**Disposal** : Dispose of contents and container in accordance with all local, regional, national and international regulations.

**Supplemental label elements** DELAYED EFFECTS FROM LONG TERM OVEREXPOSURE. Contains solvents which can cause permanent brain and nervous system damage. Intentional misuse by deliberately concentrating and inhaling the contents can be harmful or fatal. WARNING: This product contains a chemical known to the State of California to cause birth defects or other reproductive harm.  
Please refer to the SDS for additional information. Keep out of reach of children. Do not transfer contents to other containers for storage.

**Hazards not otherwise classified** : DANGER: Rags, steel wool, other waste soaked with this product, and sanding residue may spontaneously catch fire if improperly discarded. Immediately place rags, steel wool, other waste soaked with this product, and sanding residue in a sealed, water-filled, metal container. Dispose of in accordance with local fire regulations.

## Section 3. Composition/information on ingredients

**Substance/mixture** : Mixture  
**Other means of identification** : Not available.

### CAS number/other identifiers

Ingredient name	% by weight	CAS number
Med. Aliphatic Hydrocarbon Solvent	58.29	64742-88-7
Zirconium 2-Ethylhexanoate	0.19	22464-99-9
Methyl Ethyl Ketoxime	0.1	96-29-7

Any concentration shown as a range is to protect confidentiality or is due to batch variation.

There are no additional ingredients present which, within the current knowledge of the supplier and in the concentrations applicable, are classified as hazardous to health and hence require reporting in this section.



## Section 3. Composition/information on ingredients

Occupational exposure limits, if available, are listed in Section 8.

## Section 4. First aid measures

### Description of necessary first aid measures

- Eye contact** : Immediately flush eyes with plenty of water, occasionally lifting the upper and lower eyelids. Check for and remove any contact lenses. Continue to rinse for at least 10 minutes. Get medical attention following exposure or if feeling unwell.
- Inhalation** : Remove victim to fresh air and keep at rest in a position comfortable for breathing. If it is suspected that fumes are still present, the rescuer should wear an appropriate mask or self-contained breathing apparatus. If not breathing, if breathing is irregular or if respiratory arrest occurs, provide artificial respiration or oxygen by trained personnel. It may be dangerous to the person providing aid to give mouth-to-mouth resuscitation. Get medical attention. If necessary, call a poison center or physician. If unconscious, place in recovery position and get medical attention immediately. Maintain an open airway. Loosen tight clothing such as a collar, tie, belt or waistband.
- Skin contact** : Wash with plenty of soap and water. Remove contaminated clothing and shoes. Wash contaminated clothing thoroughly with water before removing it, or wear gloves. Continue to rinse for at least 10 minutes. Get medical attention. In the event of any complaints or symptoms, avoid further exposure. Wash clothing before reuse. Clean shoes thoroughly before reuse.
- Ingestion** : Get medical attention immediately. Call a poison center or physician. Wash out mouth with water. Remove dentures if any. Remove victim to fresh air and keep at rest in a position comfortable for breathing. If material has been swallowed and the exposed person is conscious, give small quantities of water to drink. Stop if the exposed person feels sick as vomiting may be dangerous. Aspiration hazard if swallowed. Can enter lungs and cause damage. Do not induce vomiting. If vomiting occurs, the head should be kept low so that vomit does not enter the lungs. Never give anything by mouth to an unconscious person. If unconscious, place in recovery position and get medical attention immediately. Maintain an open airway. Loosen tight clothing such as a collar, tie, belt or waistband.

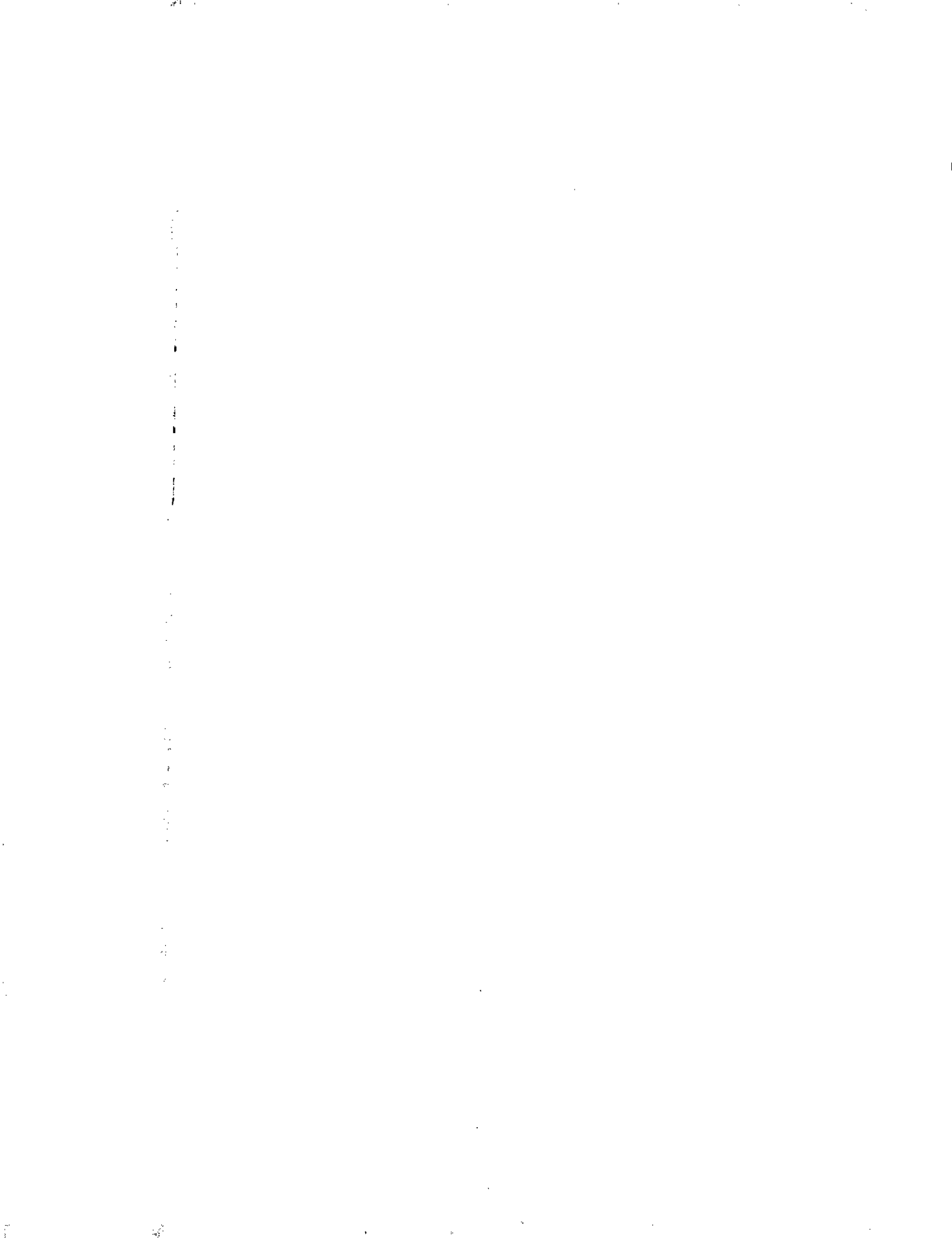
### Most important symptoms/effects, acute and delayed

#### Potential acute health effects

- Eye contact** : No known significant effects or critical hazards.
- Inhalation** : Can cause central nervous system (CNS) depression. May cause drowsiness or dizziness. May cause respiratory irritation.
- Skin contact** : May cause an allergic skin reaction.
- Ingestion** : Can cause central nervous system (CNS) depression. May be fatal if swallowed and enters airways.

#### Over-exposure signs/symptoms

- Eye contact** : No specific data.
- Inhalation** : Adverse symptoms may include the following:  
respiratory tract irritation  
coughing  
nausea or vomiting  
headache  
drowsiness/fatigue  
dizziness/vertigo  
unconsciousness  
reduced fetal weight  
increase in fetal deaths  
skeletal malformations



## Section 4. First aid measures

- Skin contact** : Adverse symptoms may include the following:  
irritation  
redness  
reduced fetal weight  
increase in fetal deaths  
skeletal malformations
- Ingestion** : Adverse symptoms may include the following:  
nausea or vomiting  
reduced fetal weight  
increase in fetal deaths  
skeletal malformations

### Indication of immediate medical attention and special treatment needed, if necessary

- Notes to physician** : Treat symptomatically. Contact poison treatment specialist immediately if large quantities have been ingested or inhaled.
- Specific treatments** : No specific treatment.
- Protection of first-aiders** : No action shall be taken involving any personal risk or without suitable training. If it is suspected that fumes are still present, the rescuer should wear an appropriate mask or self-contained breathing apparatus. It may be dangerous to the person providing aid to give mouth-to-mouth resuscitation. Wash contaminated clothing thoroughly with water before removing it, or wear gloves.

See toxicological information (Section 11)

## Section 5. Fire-fighting measures

### Extinguishing media

- Suitable extinguishing media** : Use dry chemical, CO<sub>2</sub>, water spray (fog) or foam.
- Unsuitable extinguishing media** : Do not use water jet.

**Specific hazards arising from the chemical** : Flammable liquid and vapor. In a fire or if heated, a pressure increase will occur and the container may burst, with the risk of a subsequent explosion. The vapor/gas is heavier than air and will spread along the ground. Vapors may accumulate in low or confined areas or travel a considerable distance to a source of ignition and flash back. Runoff to sewer may create fire or explosion hazard.

**Hazardous thermal decomposition products** : Decomposition products may include the following materials:  
carbon dioxide  
carbon monoxide

**Special protective actions for fire-fighters** : Promptly isolate the scene by removing all persons from the vicinity of the incident if there is a fire. No action shall be taken involving any personal risk or without suitable training. Move containers from fire area if this can be done without risk. Use water spray to keep fire-exposed containers cool.

**Special protective equipment for fire-fighters** : Fire-fighters should wear appropriate protective equipment and self-contained breathing apparatus (SCBA) with a full face-piece operated in positive pressure mode.





## Section 6. Accidental release measures

### Personal precautions, protective equipment and emergency procedures

- For non-emergency personnel** : No action shall be taken involving any personal risk or without suitable training. Evacuate surrounding areas. Keep unnecessary and unprotected personnel from entering. Do not touch or walk through spilled material. Shut off all ignition sources. No flares, smoking or flames in hazard area. Avoid breathing vapor or mist. Provide adequate ventilation. Wear appropriate respirator when ventilation is inadequate. Put on appropriate personal protective equipment.
- For emergency responders** : If specialized clothing is required to deal with the spillage, take note of any information in Section 8 on suitable and unsuitable materials. See also the information in "For non-emergency personnel".

- Environmental precautions** : Avoid dispersal of spilled material and runoff and contact with soil, waterways, drains and sewers. Inform the relevant authorities if the product has caused environmental pollution (sewers, waterways, soil or air).

### Methods and materials for containment and cleaning up

- Small spill** : Stop leak if without risk. Move containers from spill area. Use spark-proof tools and explosion-proof equipment. Dilute with water and mop up if water-soluble. Alternatively, or if water-insoluble, absorb with an inert dry material and place in an appropriate waste disposal container. Dispose of via a licensed waste disposal contractor.
- Large spill** : Stop leak if without risk. Move containers from spill area. Use spark-proof tools and explosion-proof equipment. Approach release from upwind. Prevent entry into sewers, water courses, basements or confined areas. Wash spillages into an effluent treatment plant or proceed as follows. Contain and collect spillage with non-combustible, absorbent material e.g. sand, earth, vermiculite or diatomaceous earth and place in container for disposal according to local regulations (see Section 13). Dispose of via a licensed waste disposal contractor. Contaminated absorbent material may pose the same hazard as the spilled product. Note: see Section 1 for emergency contact information and Section 13 for waste disposal.

## Section 7. Handling and storage

### Precautions for safe handling

- Protective measures** : Put on appropriate personal protective equipment (see Section 8). Persons with a history of skin sensitization problems should not be employed in any process in which this product is used. Avoid exposure - obtain special instructions before use. Avoid exposure during pregnancy. Do not handle until all safety precautions have been read and understood. Do not get in eyes or on skin or clothing. Do not breathe vapor or mist. Do not swallow. Use only with adequate ventilation. Wear appropriate respirator when ventilation is inadequate. Do not enter storage areas and confined spaces unless adequately ventilated. Keep in the original container or an approved alternative made from a compatible material, kept tightly closed when not in use. Store and use away from heat, sparks, open flame or any other ignition source. Use explosion-proof electrical (ventilating, lighting and material handling) equipment. Use only non-sparking tools. Take precautionary measures against electrostatic discharges. Empty containers retain product residue and can be hazardous. Do not reuse container.
- Advice on general occupational hygiene** : Eating, drinking and smoking should be prohibited in areas where this material is handled, stored and processed. Workers should wash hands and face before eating, drinking and smoking. Remove contaminated clothing and protective equipment before entering eating areas. See also Section 8 for additional information on hygiene measures.



## Section 7. Handling and storage

**Conditions for safe storage, including any incompatibilities** : Store in accordance with local regulations. Store in a segregated and approved area. Store in original container protected from direct sunlight in a dry, cool and well-ventilated area, away from incompatible materials (see Section 10) and food and drink. Store locked up. Eliminate all ignition sources. Separate from oxidizing materials. Keep container tightly closed and sealed until ready for use. Containers that have been opened must be carefully resealed and kept upright to prevent leakage. Do not store in unlabeled containers. Use appropriate containment to avoid environmental contamination.

## Section 8. Exposure controls/personal protection

### Control parameters

#### Occupational exposure limits (OSHA United States)

Ingredient name	Exposure limits
Med. Aliphatic Hydrocarbon Solvent	<b>OSHA PEL (United States, 6/2016).</b> TWA: 100 ppm 8 hours.
Zirconium 2-Ethylhexanoate	TWA: 400 mg/m <sup>3</sup> 8 hours. <b>ACGIH TLV (United States, 3/2016).</b> TWA: 5 mg/m <sup>3</sup> , (as Zr) 8 hours. STEL: 10 mg/m <sup>3</sup> , (as Zr) 15 minutes. <b>NIOSH REL (United States, 10/2013).</b> TWA: 5 mg/m <sup>3</sup> , (as Zr) 10 hours. STEL: 10 mg/m <sup>3</sup> , (as Zr) 15 minutes. <b>OSHA PEL (United States, 6/2016).</b> TWA: 5 mg/m <sup>3</sup> , (as Zr) 8 hours.
Methyl Ethyl Ketoxime	<b>AIHA WEEL (United States, 10/2011). Skin sensitizer.</b> TWA: 10 ppm 8 hours.

#### Occupational exposure limits (Canada)

Ingredient name	Exposure limits
Med. Aliphatic Hydrocarbon Solvent	<b>CA Quebec Provincial (Canada, 1/2014).</b> TWAEV: 400 ppm 8 hours.
Zirconium 2-Ethylhexanoate	TWAEV: 1590 mg/m <sup>3</sup> 8 hours. <b>CA Alberta Provincial (Canada, 4/2009).</b> 8 hrs OEL: 5 mg/m <sup>3</sup> , (as Zr) 8 hours. 15 min OEL: 10 mg/m <sup>3</sup> , (as Zr) 15 minutes. <b>CA British Columbia Provincial (Canada, 5/2015).</b> TWA: 5 mg/m <sup>3</sup> , (as Zr) 8 hours. STEL: 10 mg/m <sup>3</sup> , (as Zr) 15 minutes. <b>CA Quebec Provincial (Canada, 1/2014).</b> TWAEV: 5 mg/m <sup>3</sup> , (as Zr) 8 hours. STEV: 10 mg/m <sup>3</sup> , (as Zr) 15 minutes. <b>CA Ontario Provincial (Canada, 7/2015).</b> STEL: 10 mg/m <sup>3</sup> , (as Zr) 15 minutes. TWA: 5 mg/m <sup>3</sup> , (as Zr) 8 hours.
Methyl Ethyl Ketoxime	<b>AIHA WEEL (United States, 10/2011). Skin sensitizer.</b> TWA: 10 ppm 8 hours.

#### Occupational exposure limits (Mexico)

Ingredient name	Exposure limits
Zirconium 2-Ethylhexanoate	<b>NOM-010-STPS (Mexico, 4/2016).</b> LMPE-PPT: 5 mg/m <sup>3</sup> , (as Zr) 8 hours. LMPE-CT: 10 mg/m <sup>3</sup> , (as Zr) 15 minutes.



## Section 8. Exposure controls/personal protection

- Appropriate engineering controls** : Use only with adequate ventilation. Use process enclosures, local exhaust ventilation or other engineering controls to keep worker exposure to airborne contaminants below any recommended or statutory limits. The engineering controls also need to keep gas, vapor or dust concentrations below any lower explosive limits. Use explosion-proof ventilation equipment.
- Environmental exposure controls** : Emissions from ventilation or work process equipment should be checked to ensure they comply with the requirements of environmental protection legislation. In some cases, fume scrubbers, filters or engineering modifications to the process equipment will be necessary to reduce emissions to acceptable levels.

### Individual protection measures

- Hygiene measures** : Wash hands, forearms and face thoroughly after handling chemical products, before eating, smoking and using the lavatory and at the end of the working period. Appropriate techniques should be used to remove potentially contaminated clothing. Contaminated work clothing should not be allowed out of the workplace. Wash contaminated clothing before reusing. Ensure that eyewash stations and safety showers are close to the workstation location.

- Eyeface protection** : Safety eyewear complying with an approved standard should be used when a risk assessment indicates this is necessary to avoid exposure to liquid splashes, mists, gases or dusts. If contact is possible, the following protection should be worn, unless the assessment indicates a higher degree of protection: safety glasses with side-shields.

### Skin protection

- Hand protection** : Chemical-resistant, impervious gloves complying with an approved standard should be worn at all times when handling chemical products if a risk assessment indicates this is necessary. Considering the parameters specified by the glove manufacturer, check during use that the gloves are still retaining their protective properties. It should be noted that the time to breakthrough for any glove material may be different for different glove manufacturers. In the case of mixtures, consisting of several substances, the protection time of the gloves cannot be accurately estimated.

- Body protection** : Personal protective equipment for the body should be selected based on the task being performed and the risks involved and should be approved by a specialist before handling this product. When there is a risk of ignition from static electricity, wear anti-static protective clothing. For the greatest protection from static discharges, clothing should include anti-static overalls, boots and gloves.

- Other skin protection** : Appropriate footwear and any additional skin protection measures should be selected based on the task being performed and the risks involved and should be approved by a specialist before handling this product.

- Respiratory protection** : Based on the hazard and potential for exposure, select a respirator that meets the appropriate standard or certification. Respirators must be used according to a respiratory protection program to ensure proper fitting, training, and other important aspects of use.

## Section 9. Physical and chemical properties

### Appearance

- Physical state** : Liquid.
- Color** : Not available.
- Odor** : Not available.
- Odor threshold** : Not available.
- pH** : Not available.
- Melting point** : Not available.
- Boiling point** : 148°C (298.4°F)
- Flash point** : Closed cup: 39°C (102.2°F) [Pensky-Martens Closed Cup]



## Section 9. Physical and chemical properties

Evaporation rate	: 0.13 (butyl acetate = 1)
Flammability (solid, gas)	: Not available.
Lower and upper explosive (flammable) limits	: Lower: 1% Upper: 6%
Vapor pressure	: 0.17 kPa (1.27 mm Hg) [at 20°C]
Vapor density	: 5 [Air = 1]
Relative density	: 0.86
Solubility	: Not available.
Partition coefficient: n-octanol/water	: Not available.
Auto-ignition temperature	: Not available.
Decomposition temperature	: Not available.
Viscosity	: Kinematic (40°C (104°F)): <0.205 cm <sup>2</sup> /s (<20.5 cSt)
Molecular weight	: Not applicable.

### Aerosol product

Heat of combustion : 24.23 kJ/g

## Section 10. Stability and reactivity

Reactivity	: No specific test data related to reactivity available for this product or its ingredients.
Chemical stability	: The product is stable.
Possibility of hazardous reactions	: Under normal conditions of storage and use, hazardous reactions will not occur.
Conditions to avoid	: Avoid all possible sources of ignition (spark or flame). Do not pressurize, cut, weld, braze, solder, drill, grind or expose containers to heat or sources of ignition. Do not allow vapor to accumulate in low or confined areas.
Incompatible materials	: Reactive or incompatible with the following materials: oxidizing materials
Hazardous decomposition products	: Under normal conditions of storage and use, hazardous decomposition products should not be produced.

## Section 11. Toxicological information

### Information on toxicological effects

#### Acute toxicity

Product/ingredient name	Result	Species	Dose	Exposure
Zirconium 2-Ethylhexanoate	LD50 Dermal	Rabbit	>5 g/kg	-
	LD50 Oral	Rat	>5 g/kg	-
Methyl Ethyl Ketoxime	LD50 Oral	Rat	930 mg/kg	-

#### Irritation/Corrosion

Product/ingredient name	Result	Species	Score	Exposure	Observation
Methyl Ethyl Ketoxime	Eyes - Severe irritant	Rabbit	-	100 microliters	-

#### Sensitization

Not available.





## Section 11. Toxicological information

### Mutagenicity

Not available.

### Carcinogenicity

Not available.

### Reproductive toxicity

Not available.

### Teratogenicity

Not available.

### Specific target organ toxicity (single exposure)

Name	Category	Route of exposure	Target organs
Med. Aliphatic Hydrocarbon Solvent	Category 3	Not applicable.	Respiratory tract irritation and Narcotic effects

### Specific target organ toxicity (repeated exposure)

Name	Category	Route of exposure	Target organs
Med. Aliphatic Hydrocarbon Solvent	Category 1	Not determined	Not determined

### Aspiration hazard

Name	Result
Med. Aliphatic Hydrocarbon Solvent	ASPIRATION HAZARD - Category 1

Information on the likely routes of exposure : Not available.

### Potential acute health effects

- Eye contact** : No known significant effects or critical hazards.
- Inhalation** : Can cause central nervous system (CNS) depression. May cause drowsiness or dizziness. May cause respiratory irritation.
- Skin contact** : May cause an allergic skin reaction.
- Ingestion** : Can cause central nervous system (CNS) depression. May be fatal if swallowed and enters airways.

### Symptoms related to the physical, chemical and toxicological characteristics

- Eye contact** : No specific data.
- Inhalation** : Adverse symptoms may include the following:  
respiratory tract irritation  
coughing  
nausea or vomiting  
headache  
drowsiness/fatigue  
dizziness/vertigo  
unconsciousness  
reduced fetal weight  
increase in fetal deaths  
skeletal malformations



- Skin contact** : Adverse symptoms may include the following:  
 irritation  
 redness  
 reduced fetal weight  
 increase in fetal deaths  
 skeletal malformations
- Ingestion** : Adverse symptoms may include the following:  
 nausea or vomiting  
 reduced fetal weight  
 increase in fetal deaths  
 skeletal malformations

**Delayed and immediate effects and also chronic effects from short and long term exposure**

**Short term exposure**

- Potential immediate effects** : Not available.
- Potential delayed effects** : Not available.

**Long term exposure**

- Potential immediate effects** : Not available.
- Potential delayed effects** : Not available.

**Potential chronic health effects**

Not available.

- General** : Causes damage to organs through prolonged or repeated exposure. Once sensitized, a severe allergic reaction may occur when subsequently exposed to very low levels.
- Carcinogenicity** : No known significant effects or critical hazards.
- Mutagenicity** : No known significant effects or critical hazards.
- Teratogenicity** : Suspected of damaging the unborn child.
- Developmental effects** : No known significant effects or critical hazards.
- Fertility effects** : No known significant effects or critical hazards.

**Numerical measures of toxicity**

**Acute toxicity estimates**

Not available.

**Section 12. Ecological information**

**Toxicity**

Product/ingredient name	Result	Species	Exposure
Methyl Ethyl Ketoxime	Acute LC50 843000 µg/l Fresh water	Fish - Pimephales promelas	96 hours

**Persistence and degradability**

Not available.

**Bioaccumulative potential**

Product/ingredient name	LogP <sub>ow</sub>	BCF	Potential
Zirconium 2-Ethylhexanoate	-	2.96	low
Methyl Ethyl Ketoxime	-	2.5 to 5.8	low



## Section 12. Ecological information

### Mobility in soil






Soil/water partition coefficient (K<sub>oc</sub>) : Not available.

Other adverse effects : No known significant effects or critical hazards.

## Section 13. Disposal considerations

**Disposal methods** : The generation of waste should be avoided or minimized wherever possible. Disposal of this product, solutions and any by-products should at all times comply with the requirements of environmental protection and waste disposal legislation and any regional local authority requirements. Dispose of surplus and non-recyclable products via a licensed waste disposal contractor. Waste should not be disposed of untreated to the sewer unless fully compliant with the requirements of all authorities with jurisdiction. Waste packaging should be recycled. Incineration or landfill should only be considered when recycling is not feasible. This material and its container must be disposed of in a safe way. Care should be taken when handling emptied containers that have not been cleaned or rinsed out. Empty containers or liners may retain some product residues. Vapor from product residues may create a highly flammable or explosive atmosphere inside the container. Do not cut, weld or grind used containers unless they have been cleaned thoroughly internally. Avoid dispersal of spilled material and runoff and contact with soil, waterways, drains and sewers.

## Section 14. Transport information

	DOT Classification	TDG Classification	Mexico Classification	IATA	IMDG
UN number	UN1263	UN1263	UN1263	UN1263	UN1263
UN proper shipping name	PAINT	PAINT	PAINT	PAINT	PAINT
Transport hazard class(es)	3 	3 	3 	3 	3 
Packing group	III	III	III	III	III
Environmental hazards	No.	No.	No.	No.	No.
Additional information	This product may be re-classified as "Combustible Liquid," unless transported by vessel or aircraft. Non-bulk packages (less than or equal to 119 gal) of combustible liquids are not regulated as hazardous materials. <b>ERG No.</b>	Product classified as per the following sections of the Transportation of Dangerous Goods Regulations: 2.18-2.19 (Class 3). <b>ERG No.</b>	<b>ERG No.</b>		<b>Emergency schedules (EmS)</b> F-E, S-E



## Section 14. Transport information

128	128	128		
-----	-----	-----	--	--

**Special precautions for user** : Multi-modal shipping descriptions are provided for informational purposes and do not consider container sizes. The presence of a shipping description for a particular mode of transport (sea, air, etc.), does not indicate that the product is packaged suitably for that mode of transport. All packaging must be reviewed for suitability prior to shipment, and compliance with the applicable regulations is the sole responsibility of the person offering the product for transport. People loading and unloading dangerous goods must be trained on all of the risks deriving from the substances and on all actions in case of emergency situations.

**Transport in bulk according to Annex II of MARPOL and the IBC Code** : Not available.

**Proper shipping name** : Not available.

**Ship type** : Not available.

**Pollution category** : Not available.

## Section 15. Regulatory information

### SARA 313

SARA 313 (40 CFR 372.45) supplier notification can be found on the Environmental Data Sheet.

### California Prop. 65

**WARNING:** This product contains a chemical known to the State of California to cause birth defects or other reproductive harm.

## Section 16. Other information

### Hazardous Material Information System (U.S.A.)

<b>Health</b>	2
<b>Flammability</b>	2
<b>Physical hazards</b>	0

The customer is responsible for determining the PPE code for this material.

**Caution:** HMIS® ratings are based on a 0-4 rating scale, with 0 representing minimal hazards or risks, and 4 representing significant hazards or risks. Although HMIS® ratings are not required on SDSs under 29 CFR 1910.1200, the preparer may choose to provide them. HMIS® ratings are to be used with a fully implemented HMIS® program. HMIS® is a registered mark of the National Paint & Coatings Association (NPCA). HMIS® materials may be purchased exclusively from J. J. Keller (800) 327-6868.

### Procedure used to derive the classification

Classification	Justification
FLAMMABLE LIQUIDS - Category 3	On basis of test data
SKIN SENSITIZATION - Category 1	Calculation method
TOXIC TO REPRODUCTION (Unborn child) - Category 2	Calculation method
SPECIFIC TARGET ORGAN TOXICITY (SINGLE EXPOSURE) (Respiratory tract irritation) - Category 3	Calculation method
SPECIFIC TARGET ORGAN TOXICITY (SINGLE EXPOSURE) (Narcotic effects) - Category 3	Calculation method
SPECIFIC TARGET ORGAN TOXICITY (REPEATED EXPOSURE) - Category 1	Calculation method
ASPIRATION HAZARD - Category 1	Calculation method

### History

**Date of printing** : 6/9/2017

: 6/9/2017





## Section 16. Other information

Date of issue/Date of revision

Date of previous issue : 1/27/2017

Version : 4.02

Key to abbreviations : ATE = Acute Toxicity Estimate  
BCF = Bioconcentration Factor  
GHS = Globally Harmonized System of Classification and Labelling of Chemicals  
IATA = International Air Transport Association  
IBC = Intermediate Bulk Container  
IMDG = International Maritime Dangerous Goods  
LogPow = logarithm of the octanol/water partition coefficient  
MARPOL = International Convention for the Prevention of Pollution From Ships, 1973 as modified by the Protocol of 1978. ("Marpol" = marine pollution)  
UN = United Nations

### Notice to reader

It is recommended that each customer or recipient of this Safety Data Sheet (SDS) study it carefully and consult resources, as necessary or appropriate, to become aware of and understand the data contained in this SDS and any hazards associated with the product. This information is provided in good faith and believed to be accurate as of the effective date herein. However, no warranty, express or implied, is given. The information presented here applies only to the product as shipped. The addition of any material can change the composition, hazards and risks of the product. Products shall not be repackaged, modified, or tinted except as specifically instructed by Sherwin-Williams, including but not limited to the incorporation of non Sherwin-Williams products or the use or addition of products in proportions not specified by Sherwin-Williams. Regulatory requirements are subject to change and may differ between various locations and jurisdictions. The customer/buyer/user is responsible to ensure that his activities comply with all country, federal, state, provincial or local laws. The conditions for use of the product are not under the control of the manufacturer; the customer/buyer/user is responsible to determine the conditions necessary for the safe use of this product. The customer/buyer/user should not use the product for any purpose other than the purpose shown in the applicable section of this SDS without first referring to the supplier and obtaining written handling instructions. Due to the proliferation of sources for information such as manufacturer-specific SDS, the manufacturer cannot be responsible for SDSs obtained from any other source.

